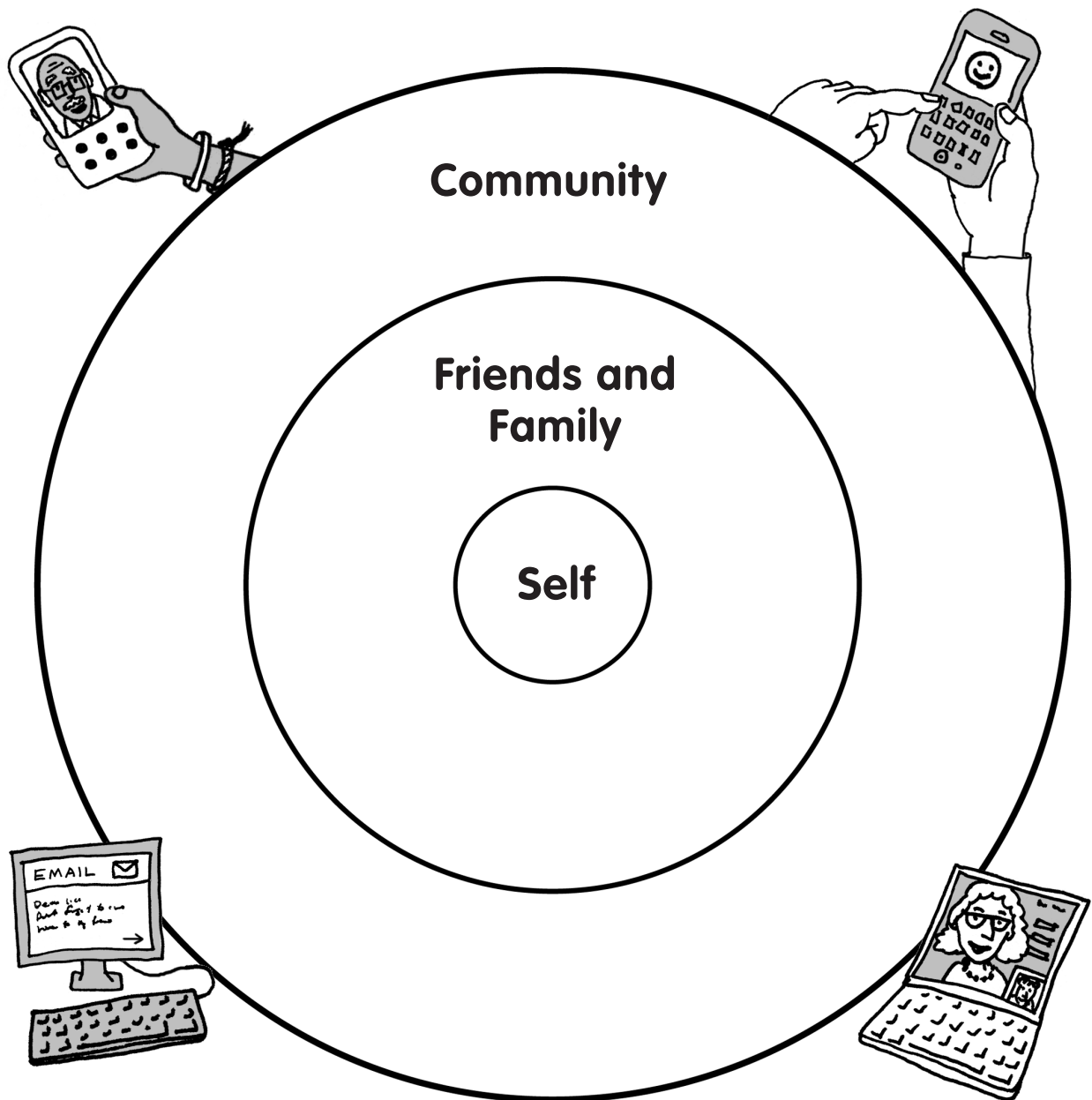
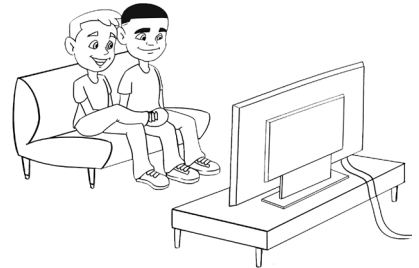


My Online Community

Directions

Write down all the people you connect with, or want to connect with, on the Internet. First, draw lines to show how you connect with them. Then draw lines to show how they connect with each other.





- c) Kids watching TV together



My Online Community

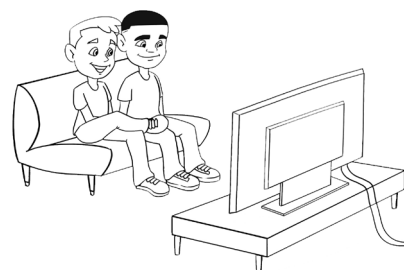
1. An example of a community is:



a) Using the computer for homework



b) A person sitting alone



c) Kids watching TV together

Answer feedback

The correct answer is **c**. Being part of a community means you share interests with other people. The kids in drawing **c** like watching the same TV show together.

2. Going *online* means:

a) Visiting a friend at his or her house

b) Going onto the Internet

c) Calling a friend on a phone

Answer feedback

The correct answer is **b**. Going online means using a computer to go onto the Internet. Calling a friend on the phone or visiting a friend at his or her house are both fun things to do, but they are not online activities.

3. Shaina writes emails to people she knows in her community, to her friends, and to her family. Mark an X through the people that do not belong in each place.

Answer feedback

You should have marked an X through **Dad** and the sports **coach**. Dad is a family member and belongs in Friends and Family. Shaina's coach is part of her larger community.

